

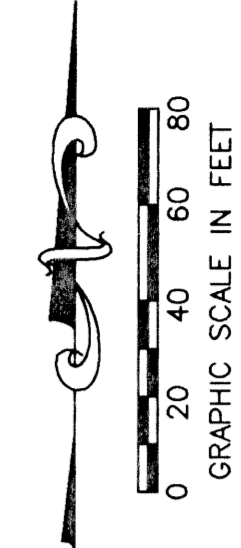
JOURNEY'S END PLAT THREE

PART OF SMITH DAIRY EAST P.U.D.
 SITUATE IN SECTIONS 3 AND 4, TOWNSHIP 45 SOUTH, RANGE 42 EAST,
 BEING A REPLAT OF A PORTION OF BLOCKS 38 AND 39,
 AND THE 50' RIGHT OF WAY, AS SHOWN ON THE PLAT OF
 PALM BEACH FARMS COMPANY, PLAT NO. 3, PB 2, PGS 45 - 54,
 PALM BEACH COUNTY, FLORIDA
 MAY, 1999 SHEET 9 OF 9

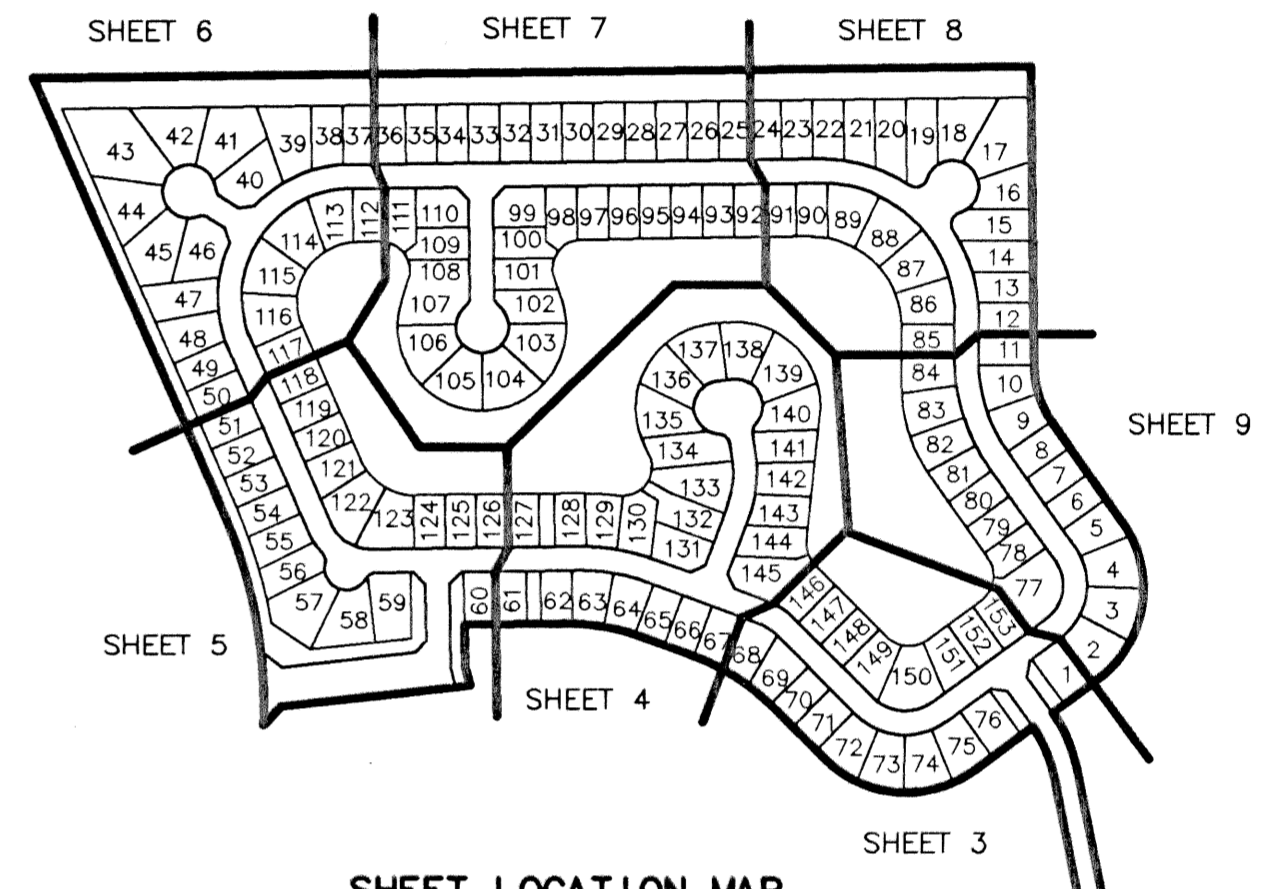
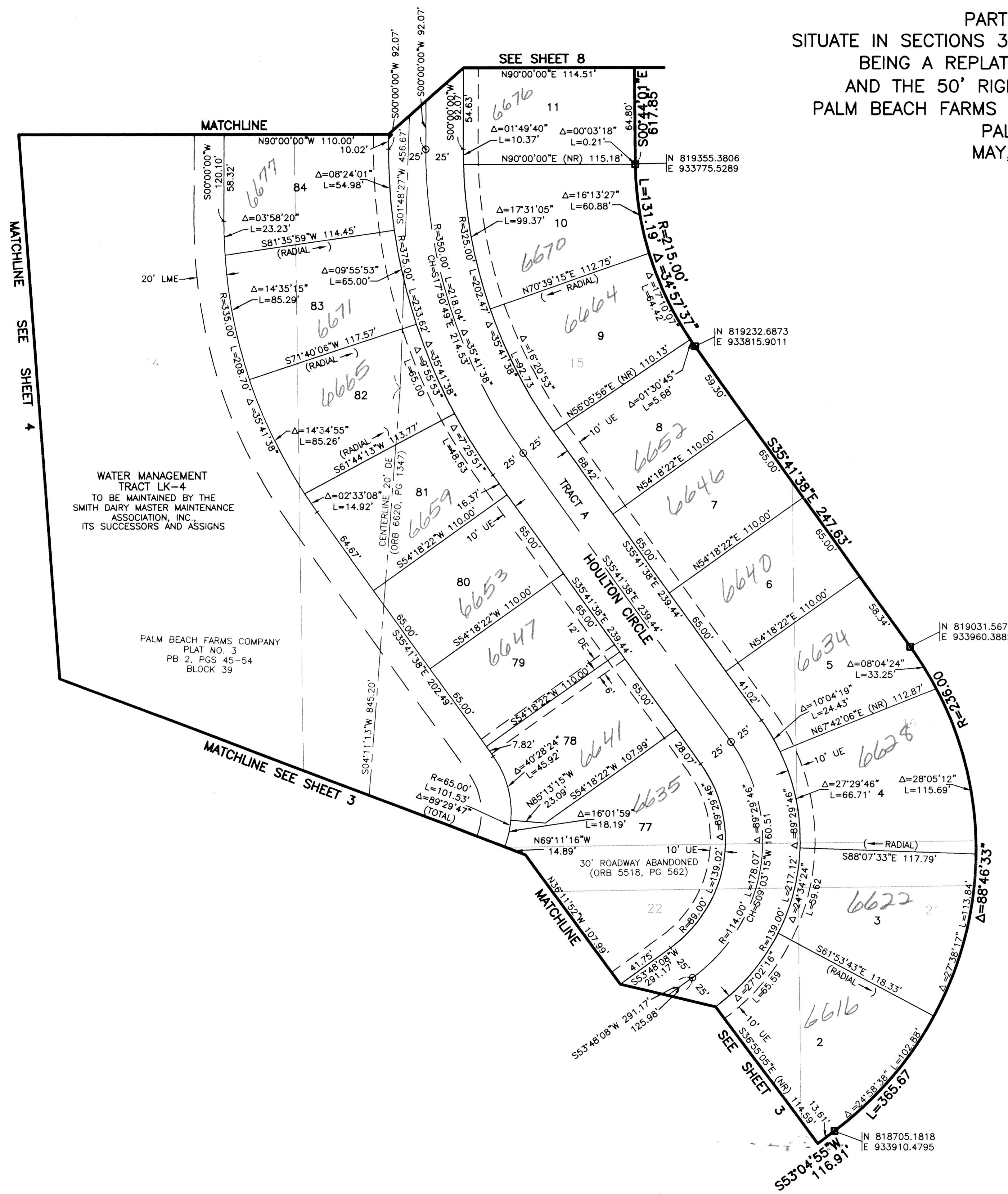
0679-007

127

STATE OF FLORIDA
 COUNTY OF PALM BEACH
 THIS PLAT WAS FILED FOR
 RECORD _____ DAY OF _____
 AD, 2000 AND DULY RECORDED
 IN PLAT BOOK _____ ON PAGES
 _____ AND _____
 DOROTHY H. WILKEN, CLERK
 BY: _____, D.C.



CIRCUIT COURT SEAL



JOURNEY'S END PLAT TWO
 (PB 85, PGS 52-63)

- LEGEND**
- L ARC LENGTH
 - AE ACCESS EASEMENT
 - BE BUFFER EASEMENT
 - Δ CENTRAL (DELTA) ANGLE
 - CH CHORD
 - DE DRAINAGE EASEMENT
 - LAE LIMITED ACCESS EASEMENT
 - LME LAKE MAINTENANCE EASEMENT
 - LMAE LAKE MAINTENANCE ACCESS EASEMENT
 - PUD PLANNED UNIT OF DEVELOPMENT
 - (NR) NON-RADIAL
 - ORB OFFICIAL RECORD BOOK
 - PG(S) PLAT BOOK
 - R RADIUS
 - (TYP) TYPICAL
 - UE UTILITY EASEMENT
 - PERMANENT REFERENCE MONUMENT
 - FOUND LB-048
 - PERMANENT REFERENCE MONUMENT
 - SET LB-048
 - ⊙ PERMANENT CONTROL POINT
 - ⊖ SET LB-048
 - ⊕ CENTERLINE

SUBDIVISION Journey's End
 BOOK 87
 FLOOD ZONE
 LEAD # 49-34
 ZONING SE
 TAZ 943
 PUD NAME

REV.: 7-22-99
 CAD FILE: WESTSM_B/SM_BRPOB

THIS INSTRUMENT WAS PREPARED BY DAVID L. SMITH, P.S.M. IN THE OFFICES OF MOCK, ROOS & ASSOCIATES, INC., 5720 CORPORATE WAY, WEST PALM BEACH, FLORIDA 33407.

SCALE: 1"=40'
 P.A. NO.: 98082.72
 DATE: MAY, 1999
 DRAWING NO.: 45-42-03-79

MOCK • ROOS
 ENGINEERS • SURVEYORS • PLANNERS
 5720 Corporate Way, West Palm Beach, Florida 33407
 (561) 683-3113, fax 478-7248

JOURNEY'S END PLAT THREE
 PART OF SMITH DAIRY EAST P.U.D.
 SITUATE IN SEC 3 AND 4, TWP 45 S, RGE 42 E,
 BEING A REPLAT OF A PORTION OF BLOCKS 38 AND 39,
 AND THE 50' RIGHT OF WAY, AS SHOWN ON THE PLAT OF
 PALM BEACH FARMS COMPANY, PLAT NO. 3, PB 2, PGS 45-54,
 PALM BEACH COUNTY, FLORIDA